

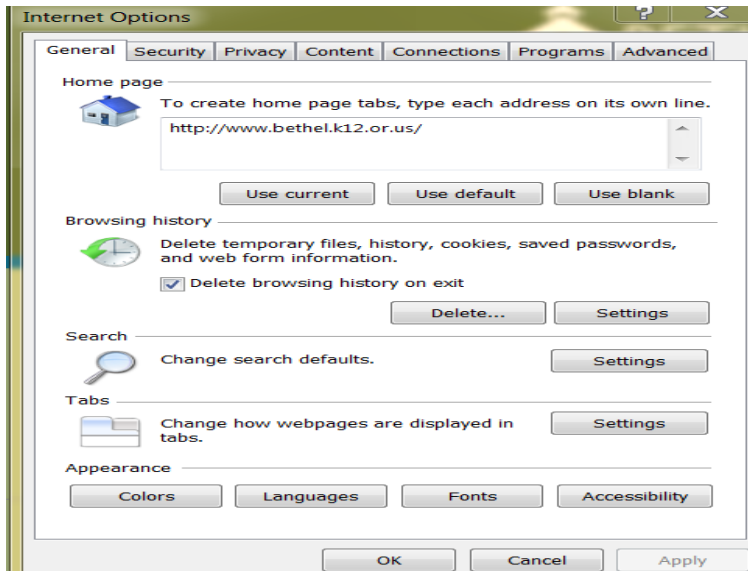
## How to Refresh the Internet Explorer browser:

First – **open** the Internet Explorer browser and **do** a fresh search for the Bethel School District’s homepage or **add** the address manually:

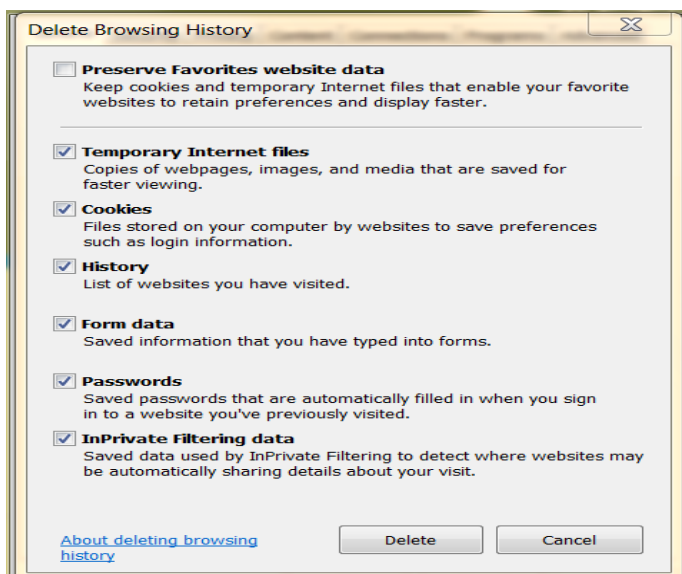
<http://www.bethel.k12.or.us/>

On the TOOLS menu in the upper right hand corner **follow** the menu path below:

Tools/Internet Options/General tab:



In the second section under Browsing History, **select** DELETE and review the settings which will show the values affected – see below:



If the first box (PRESERVE FAVORITES...) is checked, **deselect** it, then **click** on DELETE, it will take a moment for the system to clean out the browser, then **select** OK.